

# FAN08

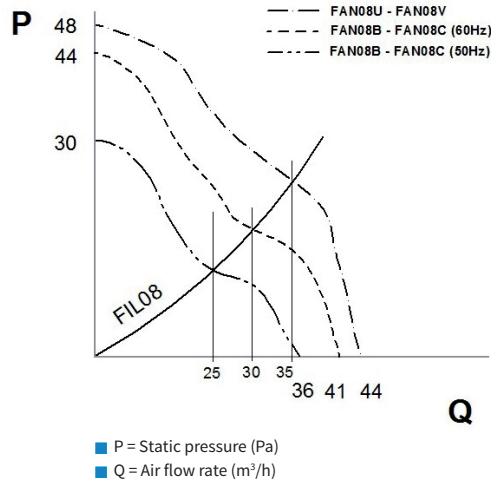
Ventilation units with filter

AIR FLOW RATE

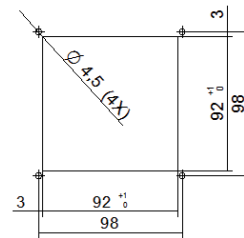
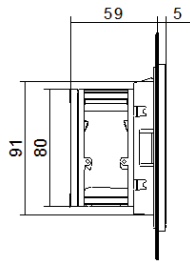
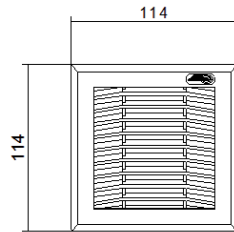
36/41 - 44 m<sup>3</sup>/h



## Performance

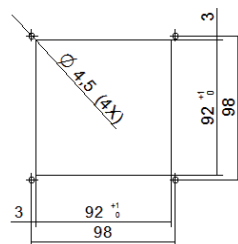
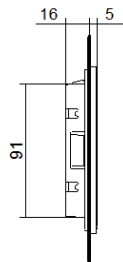
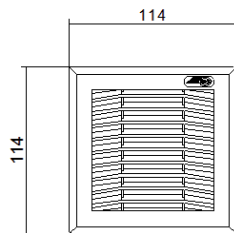


FAN08



## Dimensions

FIL08



Drilling templates

N.B.: The drilling templates are only approximate. For any requirements, contact our technical/sales office.

Features	UoM	FIL08XN0B	FAN08BN0B	FAN08CN0B	FAN08UN0B	FAN08VN0B
Air flow rate	m <sup>3</sup> /h	-	36 - 41	36 - 41	44	44
Power supply	V ~ Hz	-	230 1~ 50-60	115 1~ 50-60	24 V DC	48 V DC
Dimensions HxWxD	mm	114x114x21	114x114x64	114x114x64	114x114x64	114x114x64
Power draw	W	-	15 - 13	15 - 12	5	6
Max current	A	-	0.14 - 0.13	0.07 - 0.06	0.18	0.12
Overcurrent protection	-	-	Internal motor	Internal motor	Internal motor	Internal motor
Electrical connection	-	-	Faston	Faston	Faston	Faston
Operating cycle	-	-	100%	100%	100%	100%
Temperature limits	°C	-30+75	-10+50	-10+50	-10+50	-10+50
IP rating EN60529	-	IP54	IP54	IP54	IP54	IP54
Noise level	dB (A)	-	30 - 32	30 - 32	36	36
FAN + FIL air flow rate	m <sup>3</sup> /h	-	1xFIL08XN0B: 25 - 30 1xFIL12XN0B: 28 - 33		1xFIL08XN0B: 35 1xFIL12XN0B: 38	
Air flow direction	-	-	Ext to int. Reversible	Ext to int. Reversible	Ext to int. Reversible	Ext to int. Reversible
Filter (Eurovent)	-	EU4	EU4	EU4	EU4	EU4
Motor support	-	-	Bearings	Bearings	Bearings	Bearings
Lifetime L <sub>10</sub>	h	-	45000	45000	60000	60000
Colour	-	RAL 7035 embossed effect				
Conformity	-	CE	CE	CE	CE	CE

Accessories	
Pack of 10 fabric filters for FAN08	AAFFN08
Pack of 10 high-efficiency fabric filters for FAN08	AAFFH08
Pack of 10 fabric filters for FAN12	AAFFN12
Pack of 10 high-efficiency fabric filters for FAN12	AAFFH12
0-60°C thermostat, normally open 10A	AAFTO12
5-60°C thermostat, change-over contact 10A	AAWTS10
Bellows kit for IP55 ingress protection	C12Z01045